

# THRESHOLD/ WORK PLACEMENT YEAR

---



THRESHOLD/

# WORK PLACEMENT YEAR

---

**AT THRESHOLD WE BELIEVE THAT MORE IS IN YOU™**

Our Purpose is to help people realise their potential through world class events.

We do this by:

- Supporting individuals to go beyond what they feel is possible
- Showing clients how they can fulfil their potential as responsible businesses
- Enabling charities to maximise their fundraising and supporter engagement
- **Inspiring our employees to be the best versions of themselves.**

In 2019 our team of around 24 people lead the delivery of 35 events in 10 countries helping over 35,000 people realise what they are capable of. In the process our events raised over £16m for charity.

Like the rest of the world, 2020 didn't quite go according to plan. However, despite the COVID 19 pandemic, our team managed to: reschedule a giant events program; work out the intricacies of COVID secure event delivery and launch a brand new virtual event for over 8000 participants, raising £50,000 for charity. We are now geared towards delivering a thriving 2021 events season and would love for you to be a part of it.

We're offering students completing a sandwich course degree qualification a work experience placement in our team.

If you are interested then turn over for a quick snapshot of what life is like here and we'll take it from there...



# THRESHOLD/





**THRESHOLD/**

# WHAT THE PLACEMENT INVOLVES

---

**THINK IT MIGHT BE THE PLACE FOR YOU? THIS IS THE OFFER.**

Once we've met you and got a feel for your personality, will assign you to one of our four cross-functional teams (Operations, Marketing, Commercial or Account Management), but don't think that will limit your exposure!

At Threshold, all departments are closely interlinked and so you will learn from every member of the team to get the most out of your time with us. You will experience the full cycle of a fast-paced events company, from the planning stages through to event delivery and will be exposed to a variety of activities across the business.

**We'll be asking you to do tasks such as:**

- Building relationships with our world-renowned brands and clients, such as Macmillan Cancer Support, Vodafone and HEINEKEN, to name a few
- Delivering a best in class participant experience, in the office and on live events
- Working closely with some of the best organisations in the third sector
- Researching and delivering material for client presentations and activation ideas
- Liaising with partners to ensure activations run to the highest standard of delivery
- Maintaining client information on our databases, crucial to the running of the business
- Helping grow our social channels and engage our incredible online communities
- Identifying new prospective clients and researching industry trends
- Working with influencers to deliver inspiring content through blogs and newsletters
- Getting to grips with Google Analytics, Facebook ads and helping drive web traffic
- Managing pre event operational tasks and live event participant logistics

**It will help if you enjoy the following:**

- Building team spirit
- Being energetic and enthusiastic
- Working with people

**These skills will also be useful:**

- Confident in using Excel and Word
- Good communication and interpersonal skills
- Quick learner and a willingness to 'get stuck in'
- Ability to use your initiative and come up with new ideas and concepts

If you don't fulfil every one of these criteria then don't worry. We look for people with potential and a passion for what we do.

## THRESHOLD/

# THE PACKAGE & OTHER GREAT STUFF

---

**EXPENSES:** Travel and expenses offered with receipts

**DATES:** Up to 12 month sandwich placement from July 2021

**FLEXIBLE HOURS:** 9-5pm with flexibility for early or late starts and remote working options available

### WE LIKE TO KEEP PEOPLE HEALTHY

**We offer all volunteers and employees:**

- Opportunity to participate in Threshold Events (expenses reimbursed)
- Opportunity to take part in boot camps, Pilates, Yoga and afternoon energisers led by other Thresholdians
- Flexible time during the day to exercise or take time out
- Tea, coffee and soft drinks in the office (and a well stocked free bar)
- Mental Health First Aid Training available

### WE LIKE BEING SOCIAL

**You will be expected to attend (COVID permitting):**

- Annual summer camping trip (expenses fully reimbursed)
- Annual 3-day business planning and celebration trip (expenses fully reimbursed)
- Programme of activity throughout the year from pottery painting to more active pursuits
- Welcome lunches for new starters
- Regular catch ups out of the office to put the world to rights
- Fun, welcoming and lively environment in a bright and social office based in Brighton

### WE LIKE TO KEEP LEARNING

- Training from the best in the industry by working with an award-winning team
- Take part in internal training sessions, eg sales techniques, presentation, negotiation
- Internal mentoring opportunities, which can continue after the placement
- Networking opportunities within the industry

### WE LIKE TO GIVE BACK

- Volunteering days available each year upon request

For more information, please visit our [website](#) to see what we're all about!

# HOW TO APPLY

---

## WE WANT TO GET TO KNOW YOU

The recruitment process is a 3 parter. You are interviewing us as much as we are you and we will cover the important stuff, but also dig into the interesting stuff:

1. **The written work:** Submit an up to date CV (yours ideally) and a cover letter about why you think you would be the ideal candidate for the placement.
2. **An initial chat:** We will then want to chat in person, over video call or on the phone to see if we think you would thrive at Threshold.
3. **The final test:** The last part of the process would be to invite you to an 'open day' with other potential work placement candidates. It will be an informal environment for us to find out a bit more about you. It's also a great opportunity for you to meet a range of the team from senior to junior levels and get an idea of the type of people we are. Make sure you come armed with questions for us too!

**To apply:** please send a CV and cover letter to [careers@thresholdsports.co.uk](mailto:careers@thresholdsports.co.uk).

# THRESHOLD/ LIFE AT THRESHOLD

## CLICK TO MEET THE TEAM

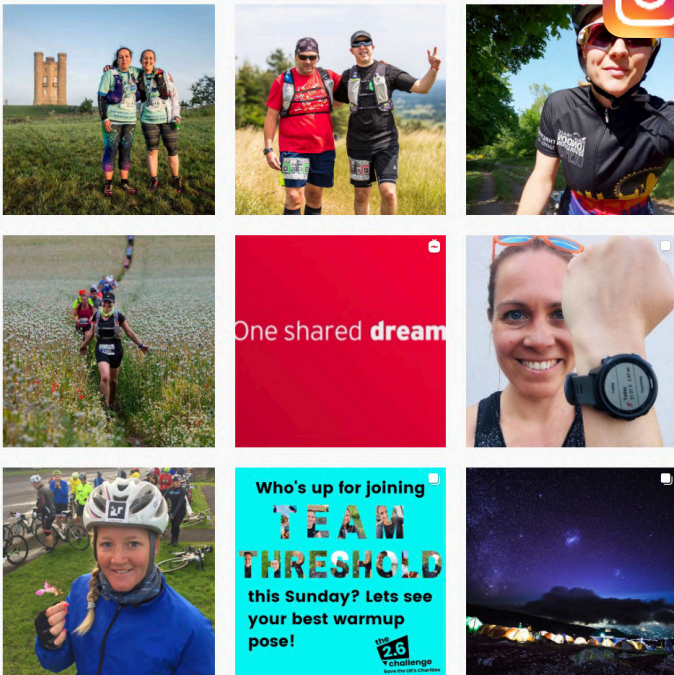


## A FEW WORDS FROM THE TEAM

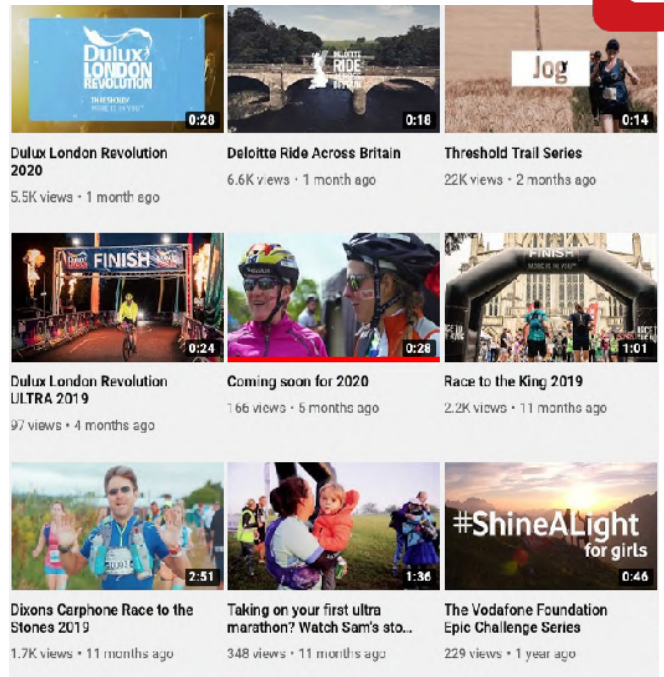
"I cannot imagine doing my placement year at a different organisation! The experience you gain and the levels of responsibility you have from the start are both challenging and extremely rewarding. The Threshold culture is amazing and I have already learnt so much from the talented and friendly team here at Threshold."

- Brooke, 2020/21 placement student

## CHECK WHAT WE'RE UP TO



## GET A FEEL FOR THE EVENTS



## CLICK TO LEARN ABOUT THE EVENTS WE DO FOR CLIENTS

