

THRESHOLD /
SENIOR EVENT MANAGER / EVENT DIRECTOR
CLIENT EVENTS



THRESHOLD/

SENIOR EVENT MANAGER / EVENT DIRECTOR CLIENT EVENTS

AT THRESHOLD WE BELIEVE THAT MORE IS IN YOU™

Our Purpose is to help people realise their potential through world class events.

We do this by:

- Supporting individuals to go beyond what they feel is possible
- Showing clients how they can fulfil their potential as responsible businesses
- Enabling charities to maximise their fundraising and supporter engagement
- **Inspiring our employees to be the best versions of themselves**

In 2019 our team of around c. 24 people lead the delivery of 35 events in 10 countries helping over 35,000 people realise what they are capable of. In the process our events raised over £16m for charity in the process. 2020 was a little different, but we cracked on, adapting to our own set of challenges.

We're looking for a new member to join our team.

Interested? Carry on scrolling for more details on the role and a quick snapshot of what life is like here at Threshold...

THRESHOLD/



WHAT THE JOB INVOLVES

THINK IT MIGHT BE THE PLACE FOR YOU? THIS IS THE JOB ON OFFER.

Our Operations team are responsible for the delivery of our growing portfolio of amazing outdoor adventures. On the client side, we work with some of the biggest companies and charities in the world, delivering bespoke events and fundraising challenges both in the UK and abroad.

We'll be asking you to do this

- Manage and deliver our largest client series
- Support on the delivery of a range of other clients events
- Set, manage and report on multiple event budgets
- Identify opportunities to improve efficiency, generate revenue and reduce costs
- Create and implement effective complex logistical plans from scratch
- Update, improve and implement logistical plans
- Take overall responsibility for H&S and emergency planning for designated events
- Lead on scenario planning & incident comms, liaising with independent H&S
- Manage multiple complex live events and support junior members of the team
- Source, contract and maintain close relationships with suppliers
- Recruit, coordinate and manage crew for live events

It will help if you enjoy the following

- **Planning and organising:** setting objectives, planning, managing time, managing resources, and monitoring progress.
- **Creating and innovating:** innovating as well as seeking and introducing change.
- **Working with people:** understanding others, adapting to the team, building team spirit, communicating proactively, showing tolerance, consideration, empathy, as well as developing and communicating self-knowledge and insight.

These skills will also be useful

- 3 - 5 years experience
- Great at building relationships within the team and with key partners
- Multi-tasking projects
- Experience in budget reporting
- Monitoring performance against deadlines and milestones
- Proficiency with Microsoft Office and ideally Keynote, Mailchimp, and CRM systems

If you don't fulfil every one of these criteria then don't worry. We look for people with potential and a passion for what we do.

THRESHOLD/

THE PACKAGE & OTHER GREAT STUFF

SALARY: £35k to £40k per annum

BONUSES: Potential for performance and company related bonuses

HOLIDAY: 28 days (inc. bank holidays) plus time off between Christmas and New Year

PENSION: 5% employer contribution

FLEXIBLE HOURS: 9-5pm with flexibility for early or late starts and remote working

LOCATION: This role is to be based from our offices in central **Brighton**

WE LIKE TO KEEP PEOPLE HEALTHY

- 1 additional day off for every weekend day worked on an event
- Vitality Healthcare which includes:
 - Discounted Apple Watch or free Amazon Prime if you keep active regularly
 - 50% off a pair of trainers every year
 - Subsidised gym membership, free coffees and cinema tickets
 - Free annual health checks
- £250 challenge fund each year to put towards a challenge of your choosing
- Free entry into Threshold events and discounts for friends and family
- Free boot camps, Pilates, Yoga and afternoon energisers led by other Thresholdians
- Flexible time during the day to exercise or take time out
- Option to buy additional holiday at discounted rate
- Free fruit and other treats in the office (and a well stocked free bar)
- Mental Health First Aid Training available

WE LIKE BEING SOCIAL

- Annual summer camping trip (fully funded)
- Annual 3-day business planning and celebration trip (fully funded)
- Programme of activity throughout the year from pottery painting to more active pursuits
- Regular catch ups in the pub to put the world to rights

WE LIKE TO KEEP LEARNING

- Internal training programmes and opportunity for additional funding for development
- Mentoring opportunities both internally and externally

WE LIKE TO GIVE BACK

- 5yr & 10yr long service rewards with additional annual leave and adventure funding
- Match Funding of up to £100 for any fundraising challenges you take on
- Volunteering days available each year upon request

HOW TO APPLY

WE WANT TO GET TO KNOW YOU

The recruitment process is a 3 parter. You are interviewing us as much as we are you and we will cover the important stuff, but also dig into the interesting stuff:

1. **The written work:** Submit an up to date CV (yours ideally) and a cover letter about why you think you would be the ideal candidate for the job
2. **An initial interview:** We will then want to chat in person, on Skype or on the phone to see if we think you would thrive at Threshold
3. **The final test:** If you make it through this far we'll ask you to complete a task relevant to your role and come in to present it. We will also get you to meet a range of the team from senior and junior levels. Come armed with questions for us as well.

To apply please send a CV and cover letter describing why you would be suitable for the role to careers@thresholdsports.co.uk

Please note that as of January '21 we will be based in Brighton and will shortly share details of our new office address. To find out what motivated our move, grab yourself a brew and [read our blog](#).

THRESHOLD/ LIFE AT THRESHOLD

CLICK TO MEET THE TEAM



A FEW WORDS FROM THE TEAM

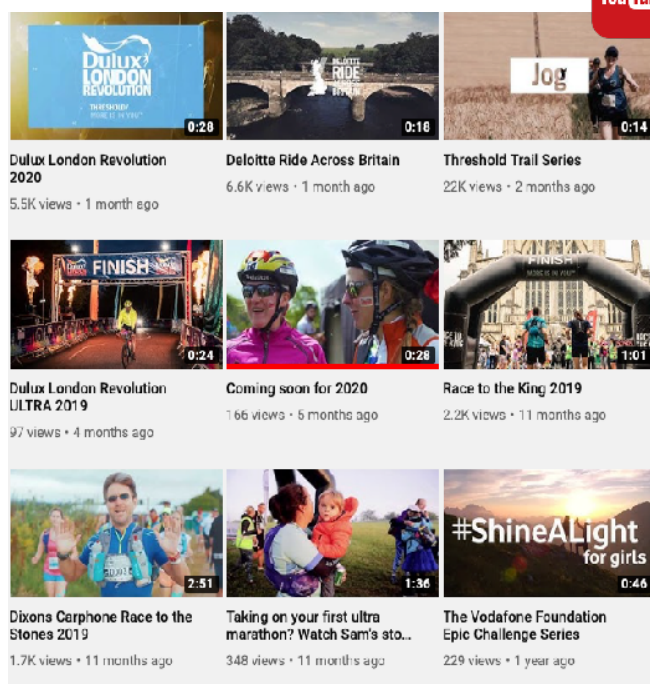
"I'm grateful to have found a workplace with such a positive and friendly environment where I feel my personal development is top priority. Then there's all the fun stuff we do in and outside of work - my wellbeing and happiness has taken a huge step-up since joining".

"I got a call from my University alumni team and after being asked a series of questions I rated Threshold as 10/10 for a place to work and 10/10 enjoyment."

CHECK WHAT WE'RE UP TO



GET A FEEL FOR THE EVENTS



CLICK TO LEARN ABOUT THE EVENTS WE DO FOR CLIENTS

