

# THRESHOLD/ WORK PLACEMENT YEAR

---



# THRESHOLD/ WORK PLACEMENT YEAR

---

## AT THRESHOLD WE BELIEVE THAT MORE IS IN YOU™

Our Purpose is to help people realize their potential through world class events.

We do this by:

- Supporting individuals to go beyond what they feel is possible
- Showing clients how they can fulfil their potential as responsible businesses
- Enabling charities to maximize their fundraising and supporter engagement
- **Inspiring our employees to be the best versions of themselves.**

In 2021, with many hand sanitizers in place, our team navigated covid-19 regulations to successfully deliver more than 28 physical and virtual events, all over the UK, helping over 40,000 people realise what they are capable of. In the process these events raised over £13m for charity. Furthermore, we expanded our portfolio with the acquisition of the awarding winning Endure24 running series.

We are now geared towards delivering a thriving 2022 events season and would love for you to be a part of it. We're offering students completing a sandwich course degree qualification a work experience placement in our team.

If you are interested, then turn over for a quick snapshot of what life is like here and we'll take it from there...



# THRESHOLD/





# THRESHOLD/ WHAT THE PLACEMENT INVOLVES

---

Once we've met you and got a feel for your personality, we will assign you to one of our four cross-functional teams. All departments are closely interlinked, so you will learn from every member of the team to get the most out of your time with us. You will experience the full cycle of a fast-paced events company, from the planning stages to event delivery and will be exposed to a variety of activities across the business.

**Here are some tasks you will be asked to do in each department (Ask us more about it!):**

## **Operations**

- Planning a series of runs, cycles, treks and other mass participation sports events
- Building relationships with our network of suppliers, freelancers and crew
- Click [here](#) for more details

## **Account Management**

- Helping to look after participants, sponsors and charities partners across our events
- Supporting management of participant registration portals, event hubs and inboxes
- Creating internal live event docs such as kit movement plans, delivery schedules
- Click [here](#) for more details

## **Marketing**

- Support in the creation of digital content (video, photography, digital flyers etc)
- Working with influencers to deliver inspiring content through blogs and newsletters
- Click [here](#) for more details

## **New Business**

- Help us to find and inspire thousands more companies to get active and fundraise
- Identifying new prospective clients and researching industry trends
- Click [here](#) for more details

**It will help if you enjoy** building team spirit, being energetic and enthusiastic, working with people

## **These skills will also be useful:**

- Confident in using Excel and Word
- Good communication and interpersonal skills
- Quick learner and a willingness to 'get stuck in'
- Ability to use your initiative and come up with new ideas and concepts

Don't worry if you don't fulfil every one of these criteria. We look for people with potential and a passion for what we do.

## THRESHOLD/

# THE PACKAGE & OTHER GREAT STUFF

---

**EXPENSES:** This is an unpaid placement; however, travel and expenses are offered. We also offer payment for time spent crewing on live events on weekends outside of work placement hours

**DATES:** Up to 12 month sandwich placement from August 2022

**FLEXIBLE HOURS:** 9-5pm with flexibility for early or late starts and working in office every Wednesday & Thursday with a flexible extra day, remote working options

### WE LIKE TO KEEP PEOPLE HEALTHY

**We offer all volunteers and employees:**

- Opportunity to participate in Threshold Events (expenses reimbursed)
- Opportunity to take part in boot camps, Pilates, Yoga and afternoon energisers led by other Thresholdians
- Flexible time during the day to exercise or take time out
- Tea, coffee and soft drinks in the office (and a well stocked free bar)
- Mental Health First Aid Training available

### WE LIKE BEING SOCIAL

**You will be expected to attend (COVID permitting):**

- Annual summer camping trip (expenses fully reimbursed)
- Annual 3-day business planning and celebration trip (expenses fully reimbursed)
- Program of activity throughout the year from pottery painting to more active pursuits
- Welcome lunches for new starters
- Regular catch ups out of the office to put the world to rights
- Fun, welcoming and lively environment in a bright and social office based in Brighton

### WE LIKE TO KEEP LEARNING

- Training from the best in the industry by working with an award-winning team
- Take part in internal training sessions, eg. sales techniques, presentation, negotiation
- Internal mentoring opportunities, which can continue after the placement
- Networking opportunities within the industry

### WE LIKE TO GIVE BACK

- Volunteering days available each year upon request

For more information, please visit our [website](#) to see what we're all about!

# THRESHOLD/ HOW TO APPLY

---

## WE WANT TO GET TO KNOW YOU

The recruitment process is a three parter. You are interviewing us as much as we are you and we will cover the important stuff, but also dig into the interesting stuff:

1. **The written work:** Submit an up to date CV (yours ideally) and a cover letter about why you think you would be the ideal candidate for the placement.
2. **An initial chat:** We will then want to chat in person, over video call or on the phone to see if we think you would thrive at Threshold.
3. **The final test:** For the final part of the process, we would invite you to meet the members of the department in which we think you will thrive. An interview will be set up with the team, so they can get a feel for you and you can find out more about the great work that they do.

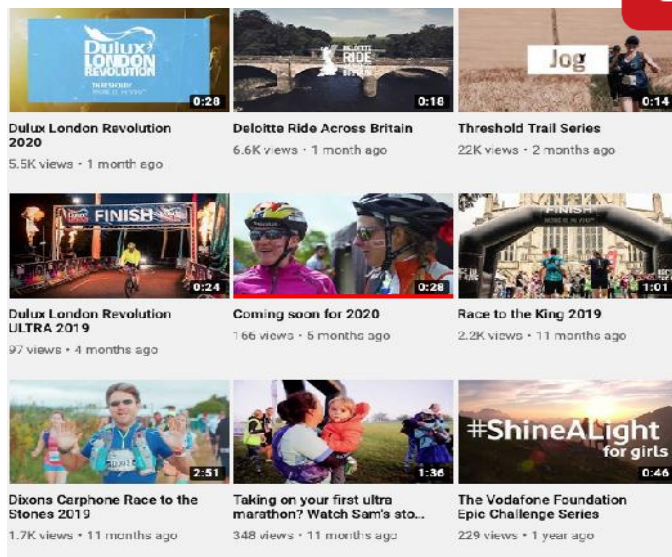
**To apply:** please send a CV and cover letter to [careers@thresholdsports.co.uk](mailto:careers@thresholdsports.co.uk).

# THRESHOLD/ LIFE AT THRESHOLD

## CLICK TO MEET THE TEAM



## GET A FEEL FOR THE EVENTS



## A FEW WORDS FROM OUR PAST PLACEMENT STUDENTS



"I cannot imagine doing my placement year at a different organisation! The experience you gain and the levels of responsibility you have from the start are both challenging and extremely rewarding. The Threshold culture is amazing and I have already learnt so much from the talented and friendly team here at Threshold." - Brooke, 2020/21 placement student

Read mid- year blog [here](#)  
Read end of year blog [here](#)

'Just like any another job, the first day can always be a bit daunting, meeting lots of new faces, in a completely new environment, where you aren't so sure on what to expect. Combine all that with a global pandemic, you can just about picture the scene of how we felt. But of course, in true Thresholdian style, we were made to feel so welcome, and a part of the family in no time.' - Mae, 2020/21 placement student

Read mid-year blog [here](#)  
Read end of year blog [here](#)

## CLICK TO LEARN ABOUT THE EVENTS WE DO FOR CLIENTS

